

PLAT DEDICATION

KNOW ALL MEN BY THESE PRESENTS, that the Mountain Iron Economic Development Authority, being the owners and proprietors of the following described property situated in the County of St. Louis, State of Minnesota, to wit:

The South Half of the South Half of the Northeast Quarter of the Southwest Quarter of Section 13, Township 58 North, Range 18 West of the Fourth Principal Meridian, City of Mountain Iron, St. Louis County, Minnesota. Except 10-1/4 acres.

And

Has caused the same to be surveyed and plotted as WOODLAND ESTATES and does hereby donate and dedicate to the public for public use the public ways and/or the drainage and utility easement(s) as created by this plat.

In witness whereof said Mountain Iron Economic Development Authority, a public body, corporate and politic under the laws of the State of Minnesota, has caused these presents to be signed by its proper officers this _____ day of _____, 20____.

By _____
Anthony Zupancich, President

By _____
Craig Reindis, Executive Director

STATE OF MINNESOTA
COUNTY OF ST. LOUIS

The foregoing instrument was acknowledged before me this _____ day of _____, 20____, by Anthony Zupancich and Craig Reindis, the proper officers of the Mountain Iron Economic Development Authority, a public body, corporate and politic, under the laws of the State of Minnesota.

Approved by the Planning Commission of the City of Mountain Iron, St. Louis County, Minnesota, on the _____ day of _____, 20____.

STATE OF MINNESOTA
COUNTY OF ST. LOUIS

The foregoing instrument was acknowledged before me this _____ day of _____, 20____, by Steve Stogman, Chairman of the City of Mountain Iron Planning and Zoning Commission.

I, Chris Mettles, do hereby certify that this plat was prepared by me or under my supervision, that I am a duly Licensed Land Surveyor in the State of Minnesota, that this plat is a correct representation of the boundary survey, that all mathematical data and labels are correctly designated on this plat, that all measurements, distances, bearings, angles, curves, etc., were correctly set with a total station or other boundary and set points, as defined in Minnesota Statutes, Section 522.01, Subd. 1, as of the date of this certification are shown and labeled on this plat and all public ways are shown and labeled on this plat.

Dated this _____ day of _____, 20____.

STATE OF MINNESOTA
COUNTY OF ST. LOUIS

This instrument was acknowledged before me on _____ by Chris Mettles.

ST. LOUIS COUNTY SURVEYOR

I hereby certify that in accordance with Minnesota Statutes, Section 503.02, Subd. 11, this plat has been reviewed and approved this _____ day of _____, 20____.

ST. LOUIS COUNTY AUDITOR

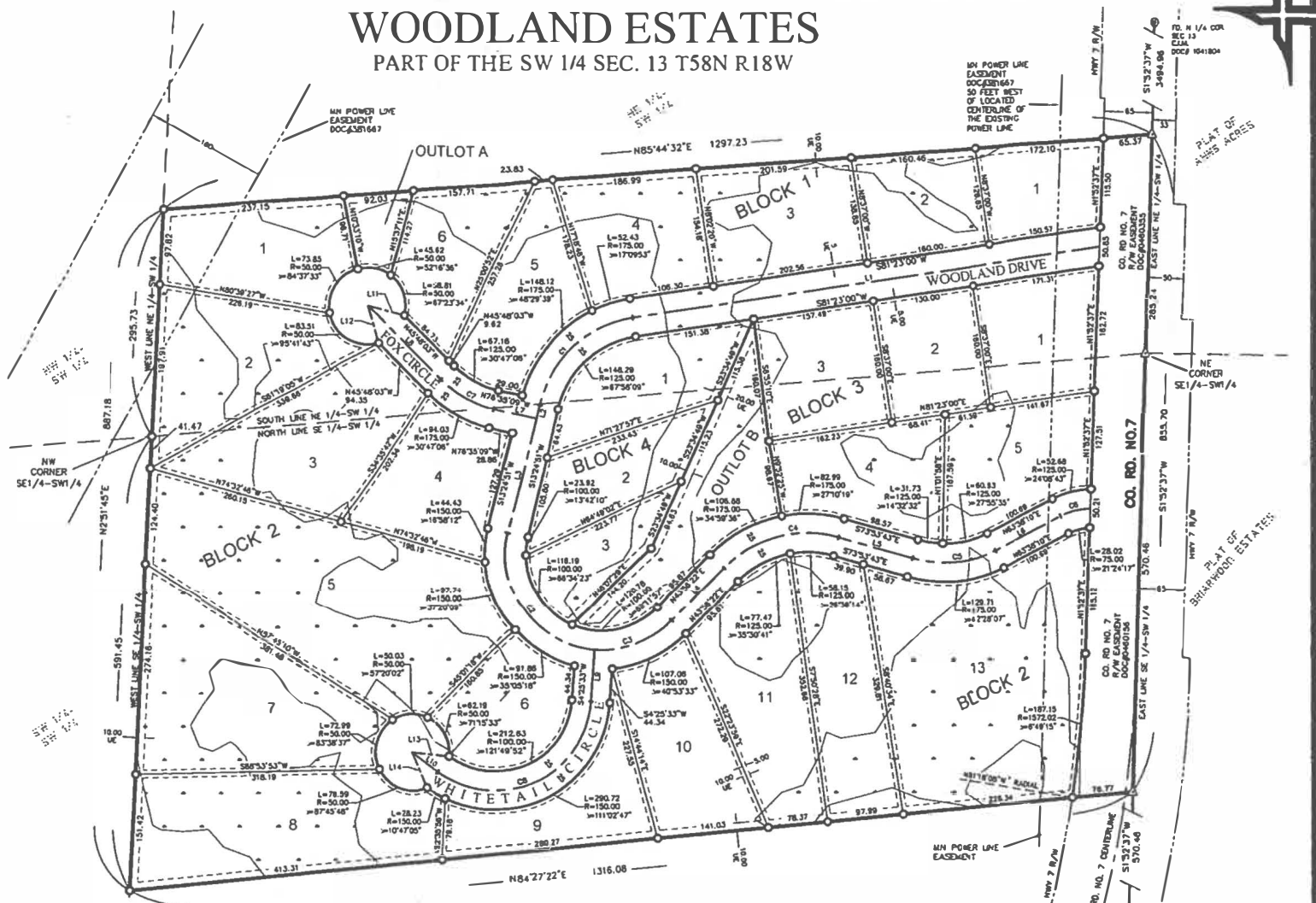
I hereby certify that this Plat of WOODLAND ESTATES was filed in the office of the Saint Louis County Recorder for public record on the _____ day of _____, 20____.

ST. LOUIS COUNTY RECORDER

Mark A. Hennrich, County Recorder

WOODLAND ESTATES

PART OF THE SW 1/4 SEC. 13 T58N R18W

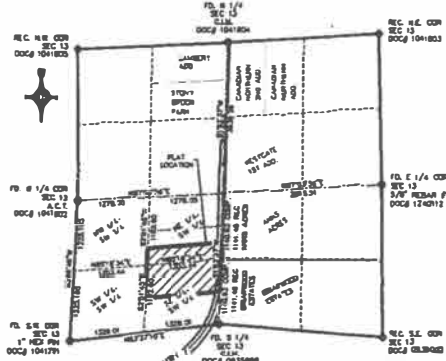


Line #	Length	Direction
L1	614.80	S81°23'00"W
L2	17.95	S13°24'51"W
L3	152.29	S13°24'51"W
L4	95.87	N43°56'22"E
L5	98.57	S73°53'43"E
L6	100.69	N63°38'10"E
L7	53.86	N76°35'09"W
L8	137.65	N45°48'03"W
L9	67.24	S42°53'33"W
L10	43.30	N53°44'36"W
L11	50.00	S75°48'03"E
L12	50.00	S15°48'03"E
L13	50.00	S83°44'36"E
L14	50.00	S23°44'36"E

Curve #	Length	Radius	Delta
C1	177.94	150.00	67°58'09"
C2	215.96	125.00	98°59'18"
C3	110.14	125.00	50°29'12"
C4	162.75	150.00	62°09'55"
C5	111.18	150.00	42°28'07"
C6	40.35	100.00	23°07'08"
C7	80.60	150.00	30°47'06"
C8	265.79	125.00	121°49'52"

BENCHMARK ENGINEERING, INC.
2878 Main Street, P.O. Box 281
Mountain Iron, Minnesota 55768
Phone 218/725-8914
http://www.bem-eng.com

INDEX MAP
NOT TO SCALE
SEC. 13 T58N R18W



- SEE LIST FOR 15.00 UTILITY AND DRAINAGE EASEMENT
- SEE LIST FOR 5.00 UTILITY AND DRAINAGE EASEMENT
- SEE LIST FOR 30.00 UTILITY AND DRAINAGE EASEMENT
- SEE LIST FOR 5.00 UTILITY AND DRAINAGE EASEMENT

- INDICATES FOUND MONUMENT
- INDICATES MONUMENT SET CALLED PL581766 CLM
- INDICATES CALCULATED POSITION
- INDICATES RECORD POSITION
- NETLANDS

BASIS OF BEARINGS
THE EAST LINE OF THE SOUTHWEST QUARTER OF THE SOUTHWEST QUARTER IS ASSIGNED A BEARING OF SOUTH 01 DEGREES 52 MINUTES 37 SECONDS WEST.